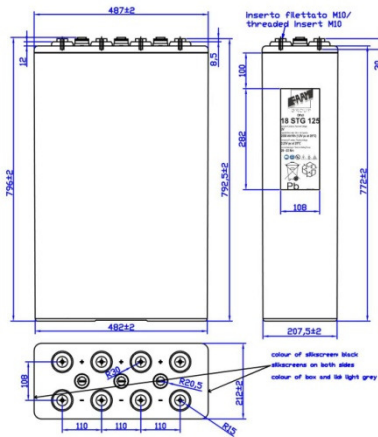




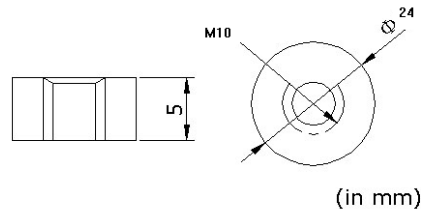
180PvZ2250 (18STG125)

PHYSICAL SPECIFICATION

Nominal Voltage		2V	Produced concerning the following guidelines: <ul style="list-style-type: none"> • CEI IEC 60896 part 21 part 22 • DIN 40742 DIN43539 T5 • CEI EN 50272-2 • CEI IEC 61427 • Eurobat "Long Life" (15years)
Nominal Capacity (10Hr, 1,8Vfin)		2250Ah	
Dimensions	Length	212 ±2mm	
	Width	487 ±2mm	
	Box Height	772 ±2mm	
	Total Height	796 ±2mm	
Drawing n°400420-0		Weight 180,0 Kg ± 5%	
Standard Terminals		Bolt Type: M10	Container and lid ABS FV0 on request



Bolt-and-nut terminal
Bolt Type: **M10**



ELECTRICAL SPECIFICATION

Characteristics			Charging curves @ 20°C	
Capacity	10 hour rate	2250,00Ah		
	8 hour rate	2057,12Ah		
	5 hour rate	1912,50Ah		
	3 hour rate	1737,66Ah		
	1 hour rate	1403,99Ah		
Capacity affected by temperature		40°C	102%	
		20°C	100%	
		0°C	85%	
Internal Resistance 0,125 mΩ±10%		SCC 13000 A ±10%		
Charge Voltage	Standby use	Max Charge Current 450 A Floating Voltage 2,23V at 20°C Boost Charge 2,35V at 20°C Temperature Coefficient -20 mV/°C		

Constant Current (Amp) and Constant Power (Watt/Cell) Discharge Table at 20°C

Time		30 min	60 min	90 min	2 h	3 h	5 h	8 h	10 h	100 h	120 h
1,65V	A	2065,50	1403,99	1160,36	780,00	601,08	386,15	270,00	236,25	30,87	26,94
	W	2559,23	2171,31	1853,15	1560,18	1228,39	829,82	580,23	483,53	59,82	51,09
1,70V	A	1996,08	1343,99	1119,65	752,14	579,22	382,50	267,43	234,00	30,57	26,19
	W	2471,74	2078,51	1788,15	1504,45	1183,72	821,99	574,71	478,92	58,39	50,58
1,80V	A	1735,72	1199,99	1017,86	696,43	546,43	364,29	257,14	225,00	29,68	25,18
	W	2187,38	1855,82	1625,57	1393,02	1116,72	782,85	552,60	460,50	57,11	48,63