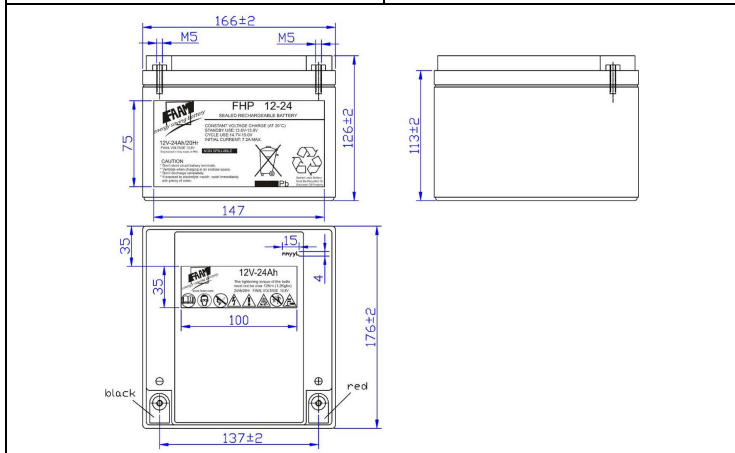




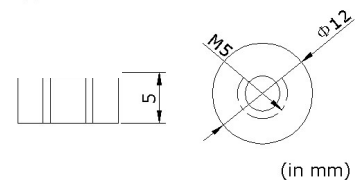
FHP 12-24

PHYSICAL SPECIFICATION

Nominal Voltage		12V	Stationary block sealed VRLA Box Material: ABS dark grey color FV0 (UL94 V-0) Lid Material: ABS dark grey color FV0 (UL94 V-0) Positive and negative flat plates with casted grids Pb/Ca/Sn Technology AGM VRLA Standards: CEI EN 60896 Parts 21 and 22
Nominal Capacity (20Hr)		24Ah	
Dimensions	Length	176 ±2mm	
	Width	166 ±2mm	
	Box Height	125 ±2mm	
	Total Height	125 ±2mm	
Drawing 400261-0		Weight 9,0 Kg ± 5%	
Standard Terminal		Bolt Type: M5	



Bolt-and-nut terminal
Bolt Type:M5



ELECTRICAL SPECIFICATION

Characteristics			Discharge curves @ 25°C (77 °F)
Capacity	20 hours rate (Vfin 1,8pc at 20°C)	24,00Ah	Discharge Characteristics(25°C/77 °F)
	10 hours rate (Vfin 1,8pc at 20°C)	22,00Ah	
	5 hours rate (Vfin 1,7pc at 20°C)	20,15Ah	
	3 hours rate (Vfin 1,7pc at 20°C)	18,81Ah	
	1 hour rate (Vfin 1,6pc at 20°C)	17,80Ah	
Capacity affected by temperature	40°C	102%	
	20°C	100%	
	0°C	85%	
Internal Resistance 10 mΩ±10%		SCC 550 A ±10%	
Constant Voltage Charge	Cycle	Initial Charging Current less than 7,2A Voltage 14.70~15.00V at 20°C Temperature Coefficient -30 mV/°C	
	Standby	No limit on Initial Charging Current Voltage 13.60~13.80V at 20°C Temperature Coefficient -20 mV/°C	

Constant Current(Amp) and Constant Power (Watt/Cell) Discharge Table at 25°C

Time		5min	10min	15min	20min	30min	45min	60min	90min	2hour	3hour
9,90V	A	94,05	61,82	46,62	32,83	27,49	20,64	16,53	9,10	8,67	6,51
	W	206,65	133,26	100,80	75,30	58,35	43,56	33,24	22,60	18,64	12,55
10,2V	A	87,62	57,15	43,88	31,17	26,57	19,60	15,83	8,78	8,36	6,27
	W	196,99	127,09	99,20	74,10	56,84	42,44	32,62	22,18	18,30	12,41
10,8V	A	80,38	51,95	39,18	27,59	23,10	17,35	14,13	7,99	7,74	5,92
	W	185,01	119,08	94,21	70,37	54,03	40,34	30,92	21,02	17,34	12,21