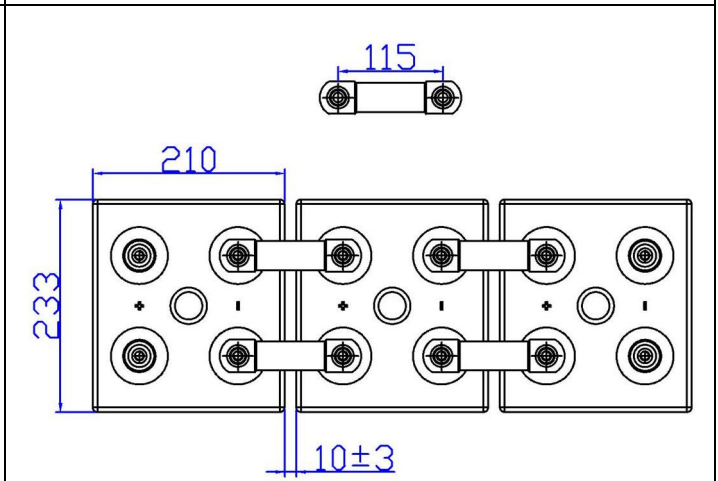
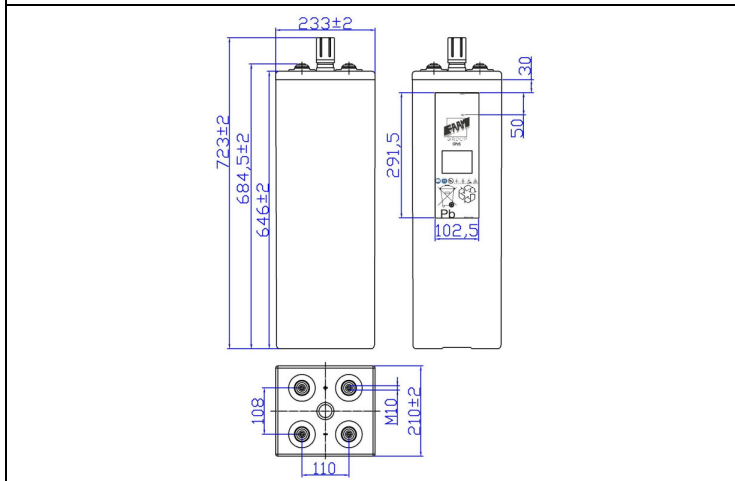




# 10STA100 – 10OPzS1000

## DIMENSIONAL FEATURES

Nominal Voltage		2V		Stationary Cell flooded (OPzS) Box Material: SAN transparent Lid Material: ABS grey color Positive tubular and negative flat plates Separators with low electric resistance Copper Connection (Cu) section: 3x30mm Standard: CEI EN 60896 Part 11 EN 50272-2 Life time: 20 years
Nominal Capacity (10 hours)		1000Ah (1,80Vfin) a 20°C		
Dimensions	Lenght	210 ±2mm		
	Width	233 ±2mm		
	Box Height	646 ±2mm		
	Total Height	723 ±2mm		
Technical Drawing n°4 00403-0		Weight 75,6 Kg ± 5%		
Screw Terminals: M10 female		Material: brass with protective treatment		



## ELECTRIC FEATURES

Characteristics			Charging curves @ 20°C (77 °F)	
Capacity	10 hours (1,80Vfin) 8 hours (1,75Vfin) 3 hours (1,70Vfin) 1 hour (1,65Vfin)	1000,0 Ah 961,8 Ah 729,8 Ah 468,0 Ah		
Temperature influence on the capacity (10h)	40°C 20°C 0°C	102% 100% 85%		
Internal Resistance Ri: 0,25 mΩ ±10%		SCC I <sub>sc</sub> : 7750 A ±10%		
Voltage Charging	Standby use	Max charging current 200A Floating Voltage 2,23V at 20°C Boosting Voltage 2,40V at 20°C Temperature Coefficient -20 mV/°C		

## Discharge Table at constant Current (Amp) and constant Power (Watt/cell) at 20°C

Time		30min	60min	90min	2hours	3hours	5hours	8hours	10hours	100hours	120hours
1.65V	A	621,40	468,00	379,10	330,04	252,45	173,31	123,90	105,00	13,59	11,53
	W	1455,89	963,90	738,72	624,00	468,27	326,27	233,05	189,00	24,53	20,81
1.70V	A	587,94	454,00	371,62	323,53	243,27	171,68	122,72	104,00	13,72	11,64
	W	1388,18	931,50	712,80	602,83	455,07	324,73	231,96	187,85	24,43	20,73
1.80V	A	478,00	400,00	340,00	296,00	229,50	163,50	118,00	100,00	13,19	11,19
	W	1128,60	810,00	648,00	557,14	425,70	307,80	219,24	180,07	23,74	20,14